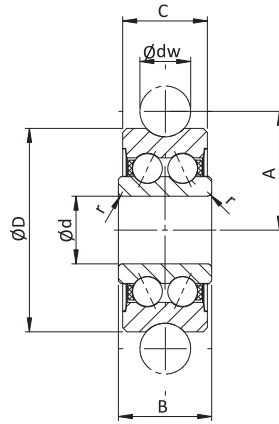
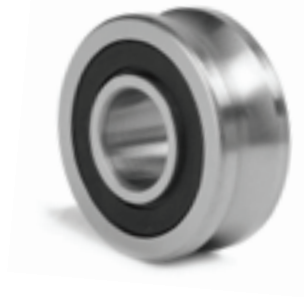


LT-FR Profillaufrollen

Track rollers



Abmessungen Dimensions (mm)								Gewicht Weight	Tragzahlen Load capacity	Max. Belastung Limit loads	empfohlene Zapfen suggested bolts		
Typ Type	dw	d	D	C	B -0.12	A	r	Gew g	C_w N	C_{0w} N	F_{rz} N	F_{0rz} N	
LT-FR50/5-4 KDD	4	5	16	7	8	9	0,20	9	1.200	860	1.300	1.780	LT-FZ5, LT-FE5
LT-FR50/5-6 KDD	6	5	17	7	8	10,5	0,20	10	1.270	820	1.300	1.780	LT-FZ5, LT-FE5
LT-FR50/8-6 KDD	6	8	24	11	11	14	0,30	20	3.670	2.280	1.300	4.560	LT-FZ8, LT-FE8
LT-FR5201-10 KDD	10	12	35	15,9	15,9	20,65	0,30	66	8.500	5.100	5.100	10.200	LT-FZ12, LT-FE12
LT-FR5301-10 KDD	10	12	42	19	19	24	0,60	135	13.000	7.700	7.500	14.200	LT-FZ12/M12, LT-FE12/M12
LT-FR5302-10 KDD	10	15	47	19	19	26,65	1,00	170	16.200	9.200	6.200	18.400	LT-FZ15, LT-FE15
LT-FR5201-12 KDD	12	12	35	15,9	15,9	21,75	0,30	66	8.400	5.000	5.100	10.000	LT-FZ12x45A1, LT-FE12x45A1
LT-FR5204-16 KDD	16	20	52	20,6	22,6	31,5	0,60	195	16.800	9.500	12.100	16.600	LT-FZ20x67A1, LT-FE20x67A1
LT-FR5206-20 KDD	20	25	72	23,8	25,8	41	0,60	435	29.500	16.600	20.700	33.200	LT-FZ25x82A1, LT-FE25x82A1
LT-FR5206-25 KDD	25	25	72	23,8	25,8	43,5	0,60	425	29.200	16.400	23.100	32.800	LT-FZ25x82A1, LT-FE25x82A1
LT-FR5207-30 KDD	30	30	80	27	29	51	1,00	600	38.000	20.800	21.400	36.200	LT-FZ30x95A1, LT-FE30x95A1
LT-FR5208-40 KDD	40	40	98	36	38	62,5	1,00	1100	54.800	29.000	55.000	58.000	LT-FZ40x105A1, LT-FE40x105A1
LT-FR5308-50 KDD	50	40	110	46	46	72,5	1,10	1250	53.000	39.500	69.000	79.000	LT-FZ40x115A1, LT-FE40x115A1

Bestellbeispiel / Ordering designation



- Außendurchmesser ≥ 52 mm : Schmierbohrung im Innenring
- weitere Typen auf Anfragen
- outer diameter ≥ 52 mm : lubrication hole on inner ring
- other types on request